

Project of



Vasavi Group

you dream we deliver

FLORA & FAUNA
FOR A FULLER,
HAPPIER LIVING



landmark residency in motinagar, hyderabad

EXPERIENCE THE NATURAL HARMONY OF AN INTIMATE COUNTRY RETREAT

Vasavi Brindavan is a pristine project of refined comfort, with supreme setting in the heart of the city - just off SR Nagar Road and Erragadda Flyover. With the natural harmony of an intimate country retreat and nestled amidst verdant greenery. While the 63% open spaces set the stage for alfresco living at its best, there are many refreshing reasons to stay indoors too.





PROMISING STATELY SPLENDOUR WHILE HONOURING THE ESSENCE OF INDEPENDENT LIVING

Gloriously designed, the unparalleled yet understated exterior of Vasavi Brindavan reaffirms its promise of stately splendour. It honours the essence of independent living in its wide windows and private balconies. Rest assured you can breathe in the fresh, clean air and marvel at the stunning views of the city.





THOUGHTFUL FEATURES THAT TRANSFORM IT INTO A SOOTHING OASIS

Vasavi Brindavan is an invitation to luxurious living in the comfort of its elegant, exquisite apartments that enable freedom of style and remain as welcoming as ever. The thoughtful features and delightful amenities transform it into a soothing oasis from which you can take up the challenges of urban chaos with natural ease.

PROJECT FEATURES

- G + 8 Floors
- 414 Luxury Apartments
- 2 BHK & 3 BHK flats areas from 1200 sft. to 2250 sft.
- Well planned Club House with Swimming Pool
- 63% open areas and 37% construction area
- GHMC approved project with zero deviations
- Exquisite Landscape
- Situated in close proximity to Bharatnagar
MMTS Railwaystation / Hyderabad Metro Rail
- Fire fighting system
- 24/7 Security with CC Cameras & Video phone arrangement to each flat connecting to security
- Provision for Creche
- 2 Level Car Parking
- Solar Fencing & Solar street lights
- Rainwater Harvesting
- Provision for Car Wash
- Provision for Library
- Provision for cafeteria
- Water Softener System

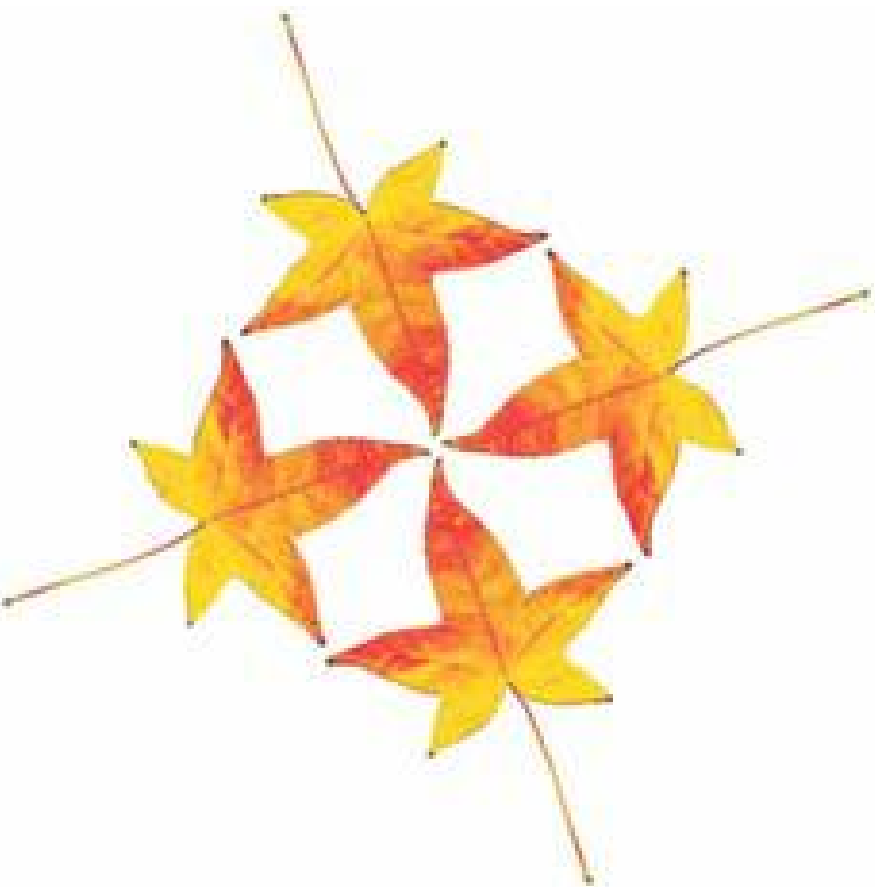


A SYMPHONIC COMMUNITY LIVING EXPERIENCE LIKE NO OTHER

MASTER PLAN



Fine details go a long way in elevating the quality of lifestyle. At Vasavi Brindavan, refreshing array of surprises dot throughout the spatial arrangement - setting the stage for a symphonic community living experience.



APARTMENTS

An exalted lifestyle, desired by many but cherished by few, is promised at the luxurious apartments with refined interiors and free-flowing aura

CLUB FEATURES

Opening up fresh avenues of socialising while facilitating playful means of rejuvenation are the many leisure amenities available at the enclave

OUTDOOR FEATURES

Positive lightness and easy vibe are ensured by the presence of many green pockets and spaces between the blocks that reverberate with natural energy

PLAY AREAS

Exhilarating delights are assured at the many play areas that also contribute to mind and body relaxation while providing a resort like living experience

LANDSCAPE

No other setting can exude such brilliance, such lustre beyond words while stimulating the heart and nourishing a lifetime's inspiration!

Ground Floor Plan

FLAT No.	1	2	3	4	5	6
AREA in sft	1900	1900	1325	1900	1900	1900

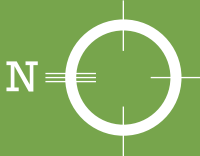


TOWER 1



Typical Floor Plan

FLAT No.	1	2	3	4	5	6
AREA in sft	1900	1900	1900	1900	1900	1900



TOWER 1



Ground Floor Plan

FLAT No.	1	2	3	4
AREA in sft	1380	750	1380	1380



Typical Floor Plan

FLAT No.	1	2	3	4
AREA in sft	1615	1615	1615	1615



A REMARKABLE
EXPERIENCE, EVEN BY
THE MOST ELEVATED
STANDARDS

The independently styled apartments of Vasavi Brindavan, with no common walls and wide corridors, render a remarkable experience, even by the most elevated standards. So that you can uncover the little-known facets to your personality - such as fitness enthusiasm - in the discreetly private ambience of your own home.

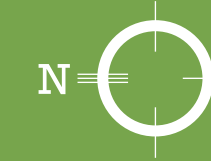


TOWER
2

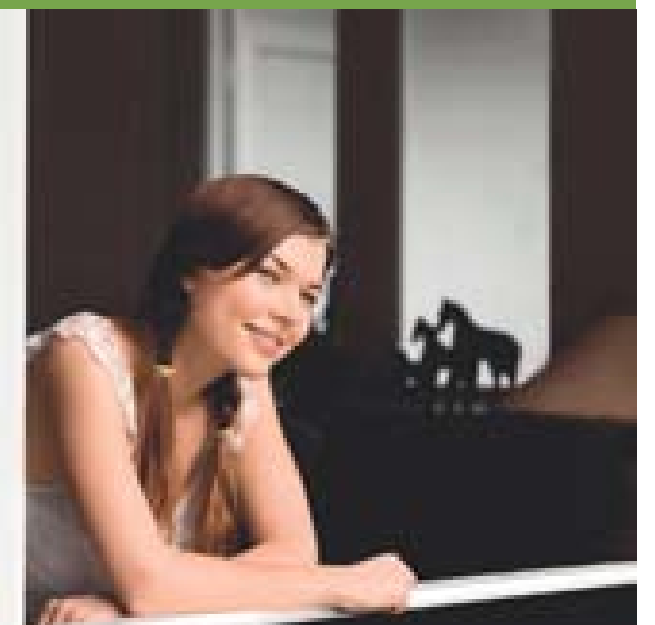


Ground Floor Plan

FLAT No.	1	2	3	4	5	6	7	8
AREA in sqft	1570	1200	1200	990	1850	1320	1320	1850



TOWER 3



Typical Floor Plan

FLAT No.	1	2	3	4	5	6	7	8
AREA in sft	1820	1360	1360	1820	1850	1320	1320	1850



Ground Floor Plan

FLAT No.	1	2	3	4	5	6	7	8
AREA in sft	2060	1910	1910	1490	2060	1910	1910	2060

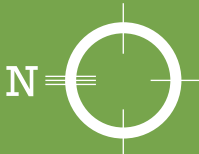


TOWER 4



Typical Floor Plan

FLAT No.	1	2	3	4	5	6	7	8
AREA in sft	2220	1910	1910	2250	2250	1910	1910	2220



TOWER 4



Ground Floor Plan

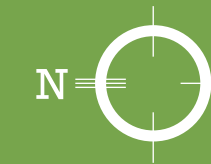
FLAT No.	1	2	3	4	5	6	7	8
AREA in sft	2060	1910	1910	1470	2060	1910	1910	1870



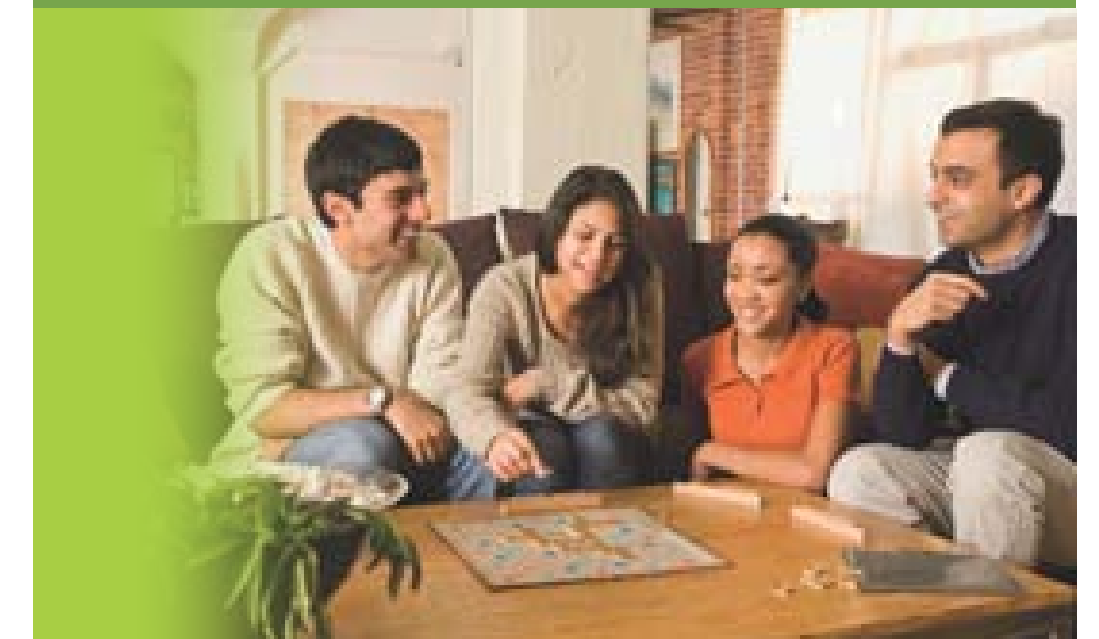
TOWER 5



	FLAT No.	1	2	3	4	5	6	7	8
	AREA in sft	2220	1910	1910	2250	2250	1910	1910	2050



TOWER 5



Ground Floor Plan

FLAT No.	1	2	3	4	5	6	7	8
AREA in sft	1820	1360	1360	1240	1850	1320	1320	1390



TOWER 6



Typical Floor Plan

FLAT No.	1	2	3	4	5	6	7	8
AREA in sft	1820	1360	1360	1820	1850	1320	1320	1630



TOWER 6



Ground Floor Plan

FLAT No.	1	2	3	4
AREA in sft	1325	750	1900	1420



TOWER 7



Typical Floor Plan

FLAT No.	1	2	3	4
AREA in sft	1570	1570	1900	1600



SUPPORTIVE ENVIRONMENT THAT OFFERS A BALANCED, DEEPLY SATISFYING WAY OF LIFE

The well punctuated blocks of apartments at Vasavi Brindavan not only leave space for privacy, but nurture niches where life can flourish in full glory too. After all, the meticulous plan has been deftly crafted to empower its residents to experience the best possible moments in a supportive environment that offers a balanced, deeply satisfying way of life.



TOWER 7



First Floor Plans



Tower -1 | Flat No. 3 | 1900



Tower - 2 | Flat No. 2 | 1380 sft.



Tower - 3 | Flat No. 4 | 1570 sft.



Tower -4 | Flat No. 4 | 2055 sft.



Tower - 5 | Flat No. 4 | 2055



Tower - 6 | Flat No. 4 | 1820 sft.



Tower - 7 | Flat No. 2 | 1325 sft.



REFRESHING REASONS TO BRING TOGETHER ALL THE RESIDENTS

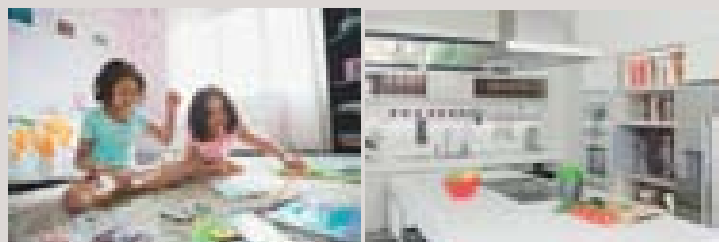
A world of inspiring luxury features ensure that no two days are the same at Vasavi Brindavan, while making everyday living a celebration. The thoughtful amenities give enough reasons to bring together all the residents. In the course of personal celebrations. At the modern gym. By the refreshing aura of swimming pool. And many more such places. What's more, the children too can savour a lifestyle that's characteristically playful.

Club Features

Multipurpose hall connected
with outdoor party lawn
Swimming Pool with Kids Pool
Gym
Children's Play Area
Indoor Games
Central Landscaping
Maintenance Office



A SUBLIME MIX OF ELEMENTS ADD AN UPBEAT AND CHIC VIBE



SPECIFICATIONS

FOUNDATION & STRUCTURE	: RCC Framed Structure designed for wind and seismic loads for zone – II (Earthquake resistance)
SUPER STRUCTURE	: Brick work with Clay bricks or Fly ash bricks in cement mortar.
PLASTERING	: Double coat sponge finish cement plastering 18mm thick for outside walls and common areas. Plastering/ ziproc/ POP finish for internal walls.
JOINERY WORKS	
Main Door	: Teak wood frame with esthetically designed teak veneered flush door shutter with melamine polish with standard hardware.
Internal Doors	: Teak wood frame with laminated/ skin/ membrane flush door shutters of standard make with standard hardware with enamel paint.
Windows	: Aluminium / UPVC glazed sliding shutters with mosquito mesh shutter of standard make with MS grill.
FLOORING & CLADDING	
Drawing, Dining & Living	: Double charged vitrified tiles with Digital Italian shades 800mm x 800mm of standard make.
Master & Other Rooms	: Vitrified tiles of standard make 600mm x 600mm.
Balconies & Utility Area	: Ceramic tiles of standard make. Ceramic tile flooring and 4 ft. height ceramic tile cladding area.
Kitchen	: Granite Flooring and Ceramic tiles dado upto 2 ft. height above kitchen platform.
Toilets	: Best quality acid resistant and Anti skid designer Tiles.
Parking	: Cement based Designer Tile/ VDF Flooring.
Staircase and common	: Combination of Granite slabs and Vitrified tiles.
KITCHEN	: Granite platform with stainless steel sink of FRANKE MAKE or equivalent with separate bore & muncpal water connection. Provision for cabinets and exhaust fan, chimney & water purifier
PAINTING	
Internal	: Plastic emulsion paint over NCL ALTEK or equivalent putty for all Rooms with smooth finish. Waterproof paint over Birla wall / JK wall putty for toilets and Balconies.
External	: Premium quality texture with weather proof paint with ASIAN / ICI Make.
WATER SUPPLY & SANITARY	: <ul style="list-style-type: none">● UPVC Water Lines of standard make.● PVC pipes / SW pipes / Concrete NP 2 pipes for sanitary & drainage lines.● American standard or equivalent make wash basins & water closets.● RAK / JAQUAR / GROHE or equivalent make CP fittings
ELECTRICAL	: <ul style="list-style-type: none">● Concealed copper wiring with ISI marked cables and standard make modular switches.● Provision for A/C in master bedroom● Power outlets for geysers in all bathrooms.● Power plug for cooking range chimneys, refrigerator, micro wave, mixer grinders in kitchen.● Telephone and TV provision in master bedroom and hall.● 3-phase supply for each unit and individual meter boards, Miniature Circuit Brakers (MCB) for each distribution board of standard make.
CABLE TV	: Cable provision for master bedroom and living room.
LIFTS	: Lifts of JOHNSON / OTIS / KONE / SCHINDLER make.
GENERATOR	: 100% DG back up with sound proof KIRLOSKER or equivalent make. Generator for all flats, common areas, common services EXCEPT Air Conditioners and all 15 AMPS power points.





AMIDST CITY AMENITIES WITH EASY CONNECTIVITY TO HITECH CITY

Rising on the proposed 100 feet road, just off the energetic Erragadda Road - the focal point of the city, the site of Vasavi Brindavan, pervades with a sense of natural calm and quiet. The presence of residential enclaves renders a comfortable, lived-in ambiance to the serene setting. Adding to the irresistible lure are plethora of entertainment options, easy connectivity to the city through MMTS and Metro station nearby, and the best part - a pleasurable drive to Hitech City via Moosapet, which is just ahead. The neighbouring S.R. Nagar and Ameerpet assure the accessibility of all essential needs with ease.

- Close To
- 5-10 minutes to the neighbouring schools/colleges
 - 5 minutes to the many shopping malls
 - 5 minutes to the many film theatres/eateries
 - 5 minutes to Bharat Nagar MMTS/ Sanathnagar Railway Station
 - 10 minutes to major multiplexes of the city
 - 10-15 minutes to commercial hubs like Ameerpet/Punjagutta
 - About 20 minutes to Hitech City



LOCATION MAP (NOT TO SCALE)



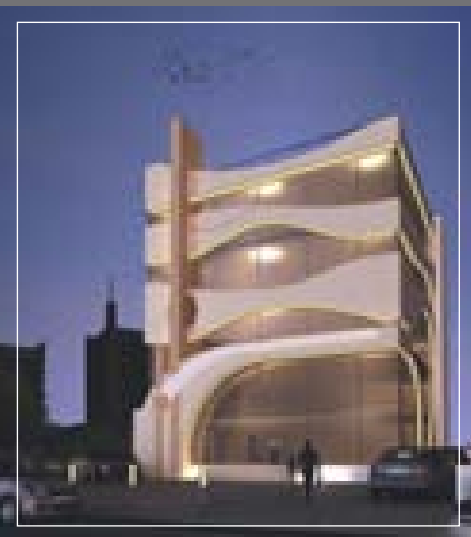
DELIVERING PREMIUM
DEVELOPMENTS OF SUPERIOR
QUALITY, EXCEPTIONAL VALUE AND
EXCLUSIVE AMENITIES



With many prestigious projects to its name, Vasavi Group is renowned for the superiority of its design and the integrity of its ventures. From conceptualising the initial concept to actual development, each aspect is painstakingly planned to craft a luxurious haven that enables its residents to relax, revitalize and get closer to nature. While the company's driving force is bringing forth friendly communities, it is also devoted to delivering premium developments of superior quality, exceptional value and hand-picked amenities.



LUXURA GREENS @ BOWENPALLY



VASAVI'S NAKSHATRA - J' HILLS



Proposed @ - YOUSUFGUDA



SRI GAYATRI ELEGANT_KARKHANA, VIKRAMPUR, SECUNDERBAD



VASAVI'S BHUVANA @ SRI NAGAR COLONY



IMPERIAL TOWERS @ AMEERPET



SVR CAPITOL @ KUKATPALLY



SHANTHINIKETHAN @ WHITEFIELDS, MADHAPUR



Developers

SHREEMUKH

BUILDERS PVT. LTD.

1-2-41, 42 & 43, Park Lane, Secunderabad - 500 003.

Email: info@shreemukhbuilders.com | www.shreemukhbuilders.com

For More Details

Ph: +91 90142 44444 / 88888

Site Office

SHREEMUKH BUILDERS PVT LTD.

D. No. 8-4-300 / 3, 31, 3/A (post)

Sy. No. 79, (Near Meter factory)

Motinagar, Hyderabad

Note: This brochure is only a conceptual presentation of the project and not a legal offering. The promoters reserve the right to alter and make changes in elevation, specifications and plans as deemed fit.